



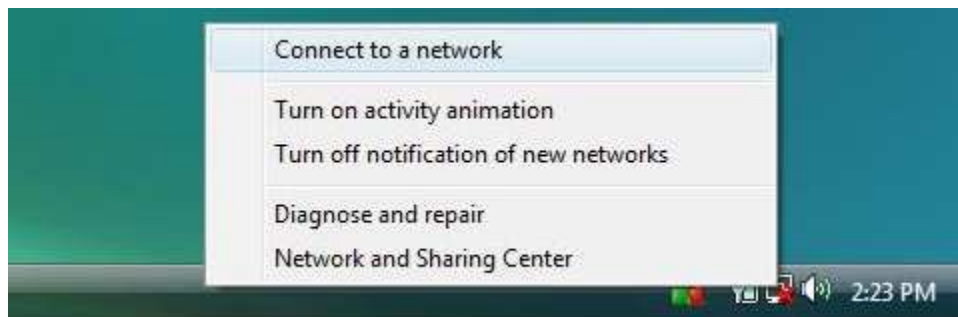
## How to connect to a Wireless Network in Windows Vista

1. Look down on the bottom right hand side of your screen. You should see a series of icons on the **taskbar** next to the **clock**. Look for an icon that shows two computer screens beside each other. If you have never connected to a wireless network before it will have a red X beside it. See picture below:



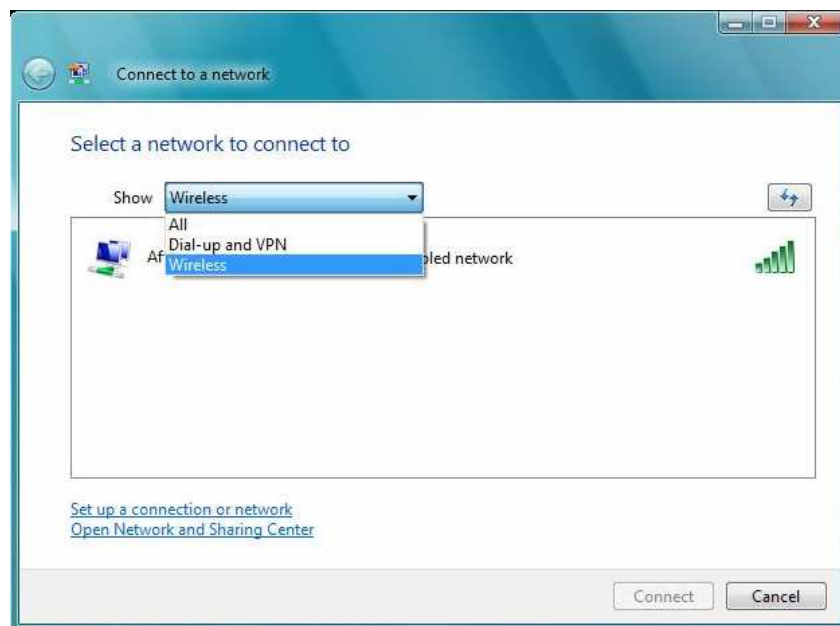
(this is the **Wireless Icon**)

2. Next **right click** on the **Wireless Icon**. This will bring up a menu. Click on **Connect to a network**. See picture below:



(Left-click on **Connect to a Network**)

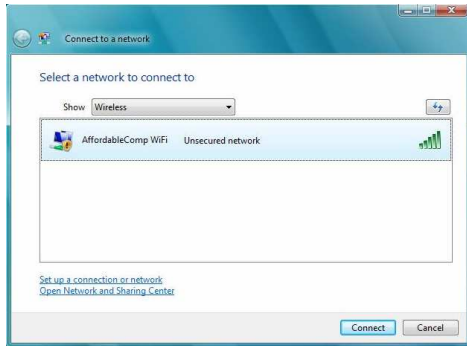
3. Clicking on **Connect to a Network** will bring up the **Connect to a Network** window. You need to tell Windows to show you only Wireless connections. Do this by clicking on the button next to **Show** and the select **Wireless** from the drop down menu. See picture below:



(Select **Wireless** from the drop down menu)

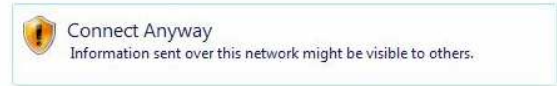
...continued on reverse side ↘

4. Now Listed should be your wireless network. If you have a DLink router and have not changed any settings your network should be called dlink, if you have a Linksys router and have not changed any settings your network should be called linksys, etc. Your network should also have the strongest signal strength. Click on your network on then click on the **Connect** button on the bottom right hand side of that window. You will probably get a message warning you that you are about to connect to an unsecured network. This is normal. Click **Connect Anyway**. See pictures below:



(Choose your network, click on it, then click **Connect**)

AffordableComp WiFi is an unsecured network



→ Connect to a different network

(Click **Connect Anyway**)

5. Your computer will now attempt to establish a connection and obtain an IP address. This may take a minute or two. During the connection process the **Wireless icon** will have a small yellow explanation mark beside it. See pictures below:

Connecting to AffordableComp WiFi



(this animation means you are being connected!)



(Notice the yellow explanation mark by the **Wireless icon**)

6. When your computer successfully connects it will say **Successfully connect to (your network name)**. Click the check mark boxes beside **Save this network** and **Start this connection automatically**. Then click the **Close** button in the bottom right hand corner of the window. Now the Wireless icon will have a small globe icon next to it. See pictures below:

Successfully connected to AffordableComp WiFi

Save this network

Start this connection automatically

(place a checkmark in both boxes)



(your **Wireless icon** should look like this)

7. Now you can close the **Connect to a network** window with the red X in the top right hand corner of the window, Click on your **Internet Explorer** icon and you should be online! When you have connected to a wireless network once, you should not have to go through this process again, Windows should automatically connect to that network again. But if you wish to connect to an alternative network, you will need to repeat the steps outlined above.



(**Double-click** on your **Internet Explorer** icon to surf the Web)